

# *The Private Garden*

## *Aloha Ke Akua*

2024



47-507 Kamehameha Highway

Kaneohe, Hawaii 96744

[hnldestination@watabe.com](mailto:hnldestination@watabe.com)



# Aloha Ke Akua Chapel

**Standard Package \$3,200**  
Seating Capacity 40 people

- Location site usage fee for Chapel (90 mins)
- Artificial Pew Flowers
- Wedding walk through with coordinator  
(30 mins)

*\*Rehearsal date & time to be determined  
2 months prior to the wedding date*

- Koa Wood Keepsake Marriage Certificate
- Parking up to 30 cars

Ceremony start time :

① 2pm (1:30pm-3:00pm) & ② 3:30pm (3:00pm-4:30pm)



# Aloha Ke Akua Kahalu'u Grove

**Standard Package \$3,200**  
Seating Capacity 30 people

- Location site usage fee for Garden (90 mins)
- 10 benches
- Wooden Arch & Artificial Arch Flower decorations
- Artificial Pew Flower decorations
- Wedding walk through with coordinator  
(30 mins)

*\*Rehearsal date & time to be determined*

*2 months prior to the wedding date*

- Koa Wood Keepsake Marriage Certificate
- Parking up to 25 cars

Ceremony start time :

① 2pm (1:30pm-3:00pm) & ② 3:30pm (3:00pm-4:30pm)



# Reception Package \$6,600

The maximum capacity will be 60 people

- Location site usage fee for Pavilion
- \$6,600 food and beverage credit**
  - 4-course menu by Michel's
  - 2 drink tickets available at bar
- Bartender Fee (5:00 p.m. to 7:30 p.m.)
- Hula Show + Fire Knife dance (120 min)

※ Reception can only be requested at the 3:30 ceremony start time.

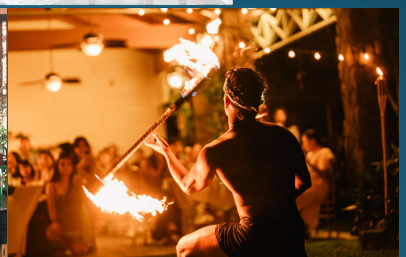
※ Price for one adult \$200 ( 4-course menu by Michel's and 2 drink tickets available at bar )

※ Price for one kids( 3 to 12 years old ) \$110 (kids menu and 2 drink tickets available at bar)

Reception start time :  
6pm (4:30pm-8:00pm)



※Chairs are subject to change.



# Pavilion ceremony and reception Package

## Ceremony \$2,000

The maximum capacity will be 60 people

\*This package must be ordered with the ceremony and reception.

- Location site usage fee for Pavilion
- Artificial Altar Flowers
- 20 Chairs
- Wedding Sign Table
- Koa Wood Keepsake Marriage Certificate
- Parking up to 25 cars

Ceremony start time :  
5pm (4pm-5:30pm)

## Reception \$6,600

The maximum capacity will be 60 people

- Location site usage fee for Pavilion
- \$6,600 food and beverage credit
  - 4-course menu by Michel's
  - 2 drink tickets available at bar
- Bartender Fee (5:00 p.m. to 7:30 p.m.)
- Hula Show + Fire Knife dance ( 120 min)

※ Price for one adult \$200 (4-course menu by Michel's and 2 drink tickets available at bar)

※ Price for one kids( 3 to 12 years old ) \$110 (kids menu and 2 drink tickets available at bar)

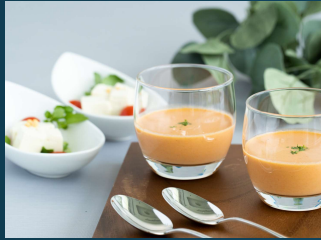
Reception start time :  
6pm (5:30pm-8:00pm)



# Reception Menu

## Adult

※Alternative menus are available for those with food allergies or who prefer vegetarian or vegan options. If you would like to make any changes, please contact us at least 5 (five) days prior to your reservation date.



## MICHEL'S M E N U

### Starter Sampler

CHILLED ROASTED TOMATO BISQUE  
with bay shrimp

LOCAL TOFU POKE  
Made with tofu from Aloha Tofu  
marinated in special sesame dressing,  
accented with refreshing cucumber,  
watercress, and tomatoes

### Salad

MICHEL'S CAESAR SALAD  
fresh romaine lettuce,  
hearts of palm, and croutons  
folded in Michel's traditional creamy dressing

### Main Dish Trio

KONA ABALONE  
kona farm raised abalone  
prepared in Michel's famous herb butter

GARLIC SHRIMP  
crisp fried shrimp pan sauteed in our original  
garlic batter

STRIPLOIN STEAK  
wild mushroom sauce, roasted garlic mashed  
potatoes, and haricot vert beans

### Dessert

TROPICAL MANGO MOUSSE  
milky mousse of mango

## Kids ( 3 to 12 years old )

※You can choose between Option A and Option B.  
If no choice is made, Option A is assigned by  
default.

Choice A



Choice B



## MICHEL'S

## K I D S M E N U

### Soup of the Day

**Choice A**  
*Chicken Fingers & Fries  
with Macaroni & Cheese*

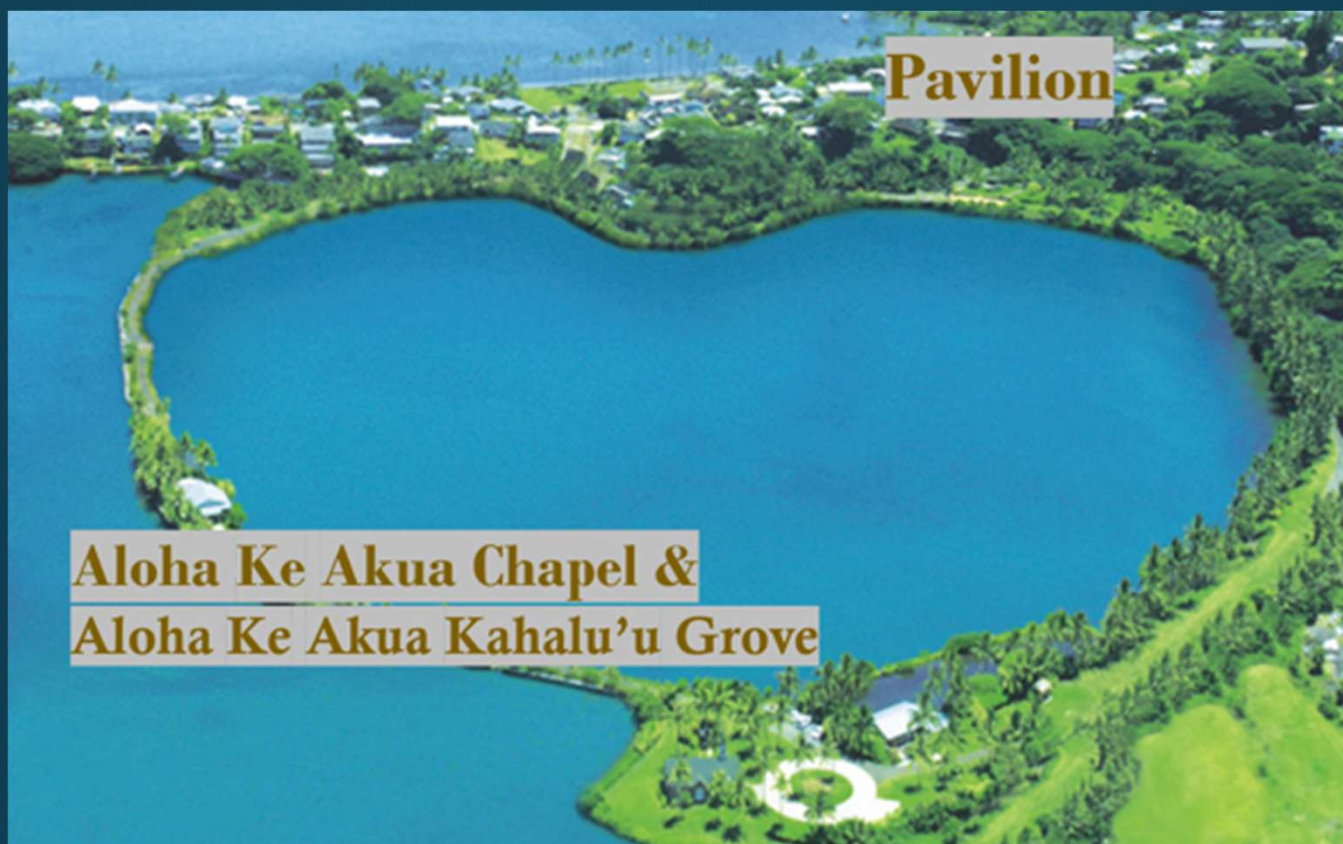
**Choice B**  
*Loco Moco  
with Sunny-Side Up Egg*  
¼ pound grilled beef patty on a bed of steamed white rice  
topped with a local sunny-side up egg

### Gelato

If not selected, it will be Choice A.



# Venue Map



## Time range

	1p.m.	2p.m.	3p.m.	4p.m.	5p.m.	6p.m.	7p.m.	8p.m.
Chapel		①Ceremony	②Ceremony	Reception (6p.m. Start)				
Kahalu'u Grove		①Ceremony	②Ceremony	Reception (6p.m. Start)				
Pavilion Plan(Set)				Ceremony	Reception (6p.m. Start)			

### <Chapel, Kahalu'u Grove>

- ① Ceremony start time : 2pm (1:30pm-3:00pm)
- ② Ceremony start time : 3:30pm (3:00pm-4:30pm)

※ Only ② is available for reception applications

### <Pavilion Plan>

Ceremony start time : 5pm (4pm-5:30pm)

※ This package must be ordered with the ceremony and reception.



# Payment and Cancellation Policy

## Setup Fees

Upon the confirmation of reservation and written acknowledgement by the Company, Customer shall pay \$500 nonrefundable setup fees. The setup Fees shall be applied to the basic package price and also be applied to the deposit mentioned below. \*Method of Payment: Major Credit cards such as VISA, MASTER, AMEX, JCB and DINERS. The Payment will be processed via Square System.

## Deposit

Customer must pay a deposit equal to at least 50% of the total fee payable for the basic package (include the Setup Fees) to the Company upon booking. If the payment is not received during the prescribed time frame, the reservation may be cancelled at the Company's sole discretion without Customer's consent or further notice to Customer. Payments for the option(s) services purchased by customer will be handled separately.

## Cancellations and Refunds for Wedding Package & Optional Item(s)

100 % of package and optional fee will be applied if cancelled within thirty (30) days prior to the scheduled wedding date, no refunds shall be made by the Company to Customer.





# Important Notice

- Decorations and chairs included in the package are subject to change.
- Menus and ingredients are subject to change depending on the season and circumstances.
- The all foods must be by pre order.
- All beverage order will be on event day.
- The price for food includes the service charge and excludes the state tax.
- The price for beverage which is ordered on event day includes tax.
- Receptions must done by 8:00 p.m. The Bar must close by 7:30pm
- Please inquire if you would like to start using the bar earlier than 5:00 p.m. The end time cannot be extended.
- No outside Food and Beverage are allowed. Except wedding cake and wine not on the menu with corkage fee.(Wedding Cake : \$100 + tax, Wine : \$50 + tax / 750ml per bottle)
- Please confirm any dietary restrictions you or your guests has.- Hawaii State law prohibits the serving of alcohol to anyone under the age of 21. Servers may ask for identification before serving alcohol.
- Waive rights if you won't use item(s) in the package.
- No refunds if Food credits are not used all amount.

